



TRANSFORM®
PRODUCT INFORMATION



Transform Composite Railing has the look and feel of a wood railing, but provides superior resistance to moisture, mold and warping. Made with Compositcore® — a material that contains no wood or organic fibers — Transform features a lightly textured, durable finish. Available with multiple top rail options and infill styles, including traditional square balusters, black round aluminum balusters and cable. For a more unique product, you can mix and match Avalon Aluminum Railing® or MetalWorks Excalibur® Steel Railing with Transform posts and top rails to easily create a custom fabricated look that doesn't require custom work.

FEATURES & BENEFITS

- Square and round aluminum balusters securely fit into rails without using screws
- Cable infill option attaches easily to posts
- Hidden brackets provide a clean, finished look
- Universal bracket for level, stair and angled applications
- Transferable Limited Lifetime Warranty



NEW!



Satin White



Satin Black



COMPOSICORE®

Compositcore used in our railing products, contains no wood fibers, making it water resistant meaning it will not rot, splinter, warp or stain and is resistant to mold — keeping your railing beautiful for years to come.

INFILL STYLE OPTIONS



1 1/8" Square Balusters



3/4" Round Aluminum Balusters

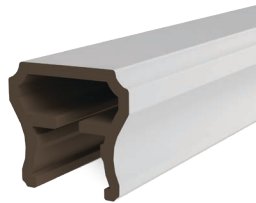


1/8" Cable Infill

TOP RAIL OPTIONS



Presence®



Emerge®



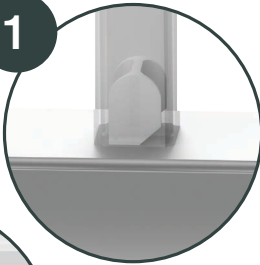
Aspire®



Graspable Stair

HOW IT WORKS

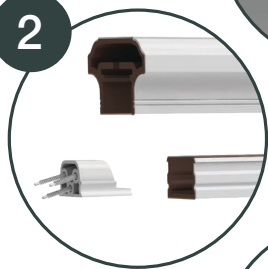
1



1 EASE OF INSTALLATION

Transform level and stair balusters attach quickly and easily with mounting adapters, saving time by eliminating the need for tedious nailing or screwing each baluster into the railing. This innovative baluster adapter works in both level and stair rail configurations.

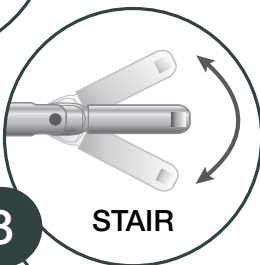
2



2 UNIQUE BRACKET DESIGN

Brackets are concealed within the rail structure, providing a clean finished look. One bracket is used for all applications – level, stair, and angled – simply cut the bracket at the angle for the desired installation.

3



STAIR

3 SPECIALLY DESIGNED CABLE FITTINGS

Stainless steel cable fittings come in both level and stair options packed for 36" finished rail height or 42" finished rail height. Our stair fittings swivel upward or downward for your stair angle, allowing you to insert the fitting straight, and angle in the direction needed for your stairs without worrying about installing the fitting at an angle.

LEVEL





SCAN ME