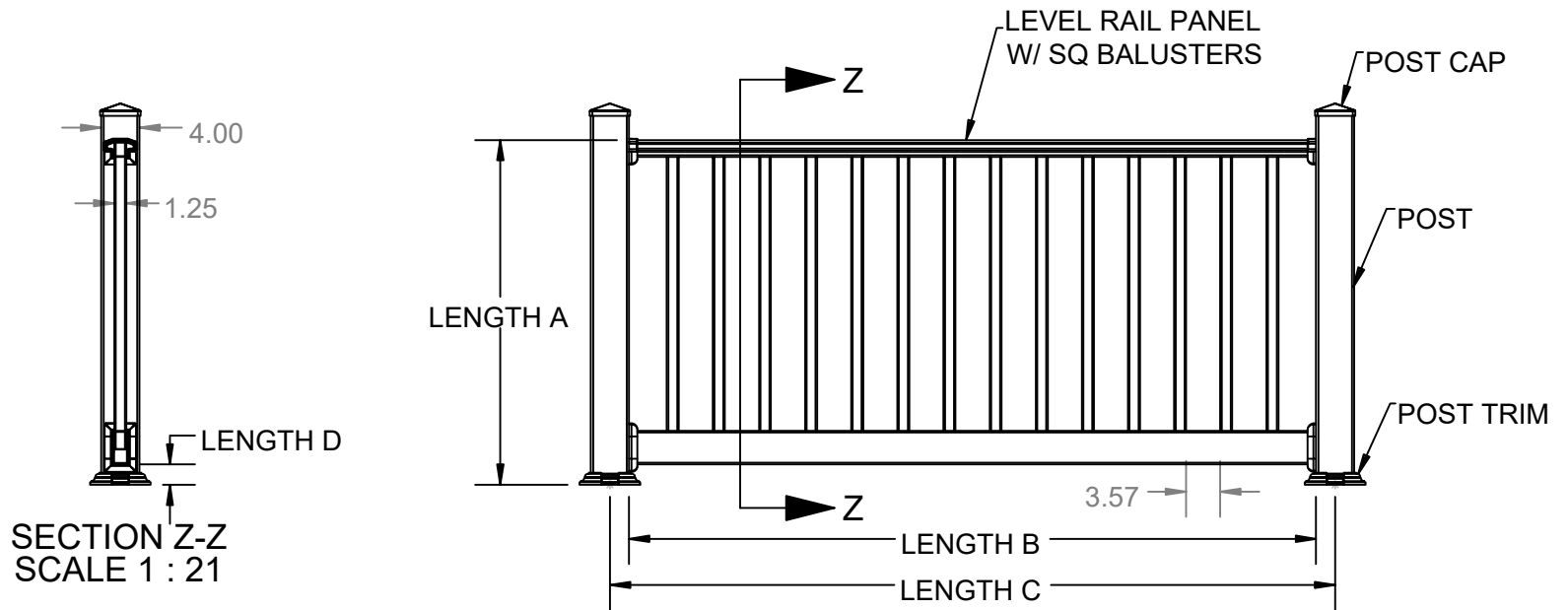
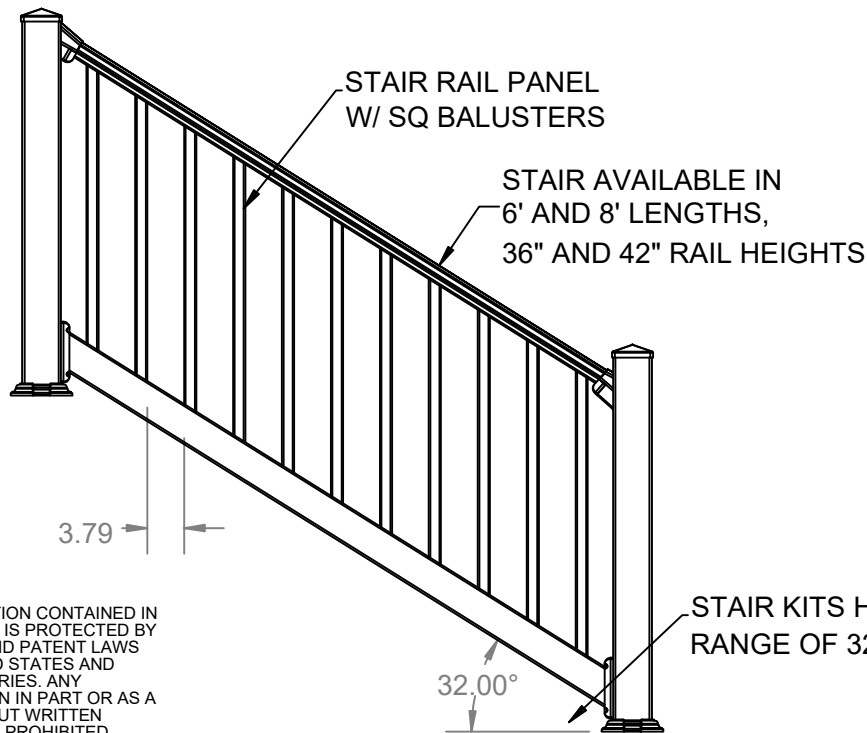


ORIGINAL RAIL LEVEL AND STAIR RAIL DETAILS



NOTE:

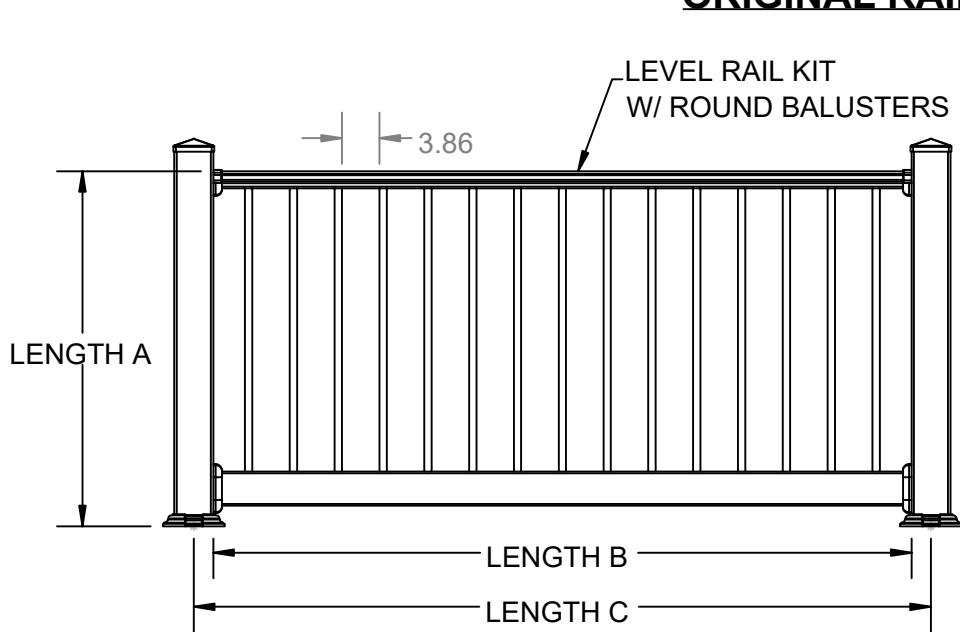
- (A) FINISHED RAIL HEIGHT = 36", 42"
- (B) PANEL LENGTH = 47.75", 71.75", 95.75", 119.75"
- (C) MAX SPANS= 98.5X36" IRC, 98.5X42" IBC
- (D) BOTTOM SPACE = 2"



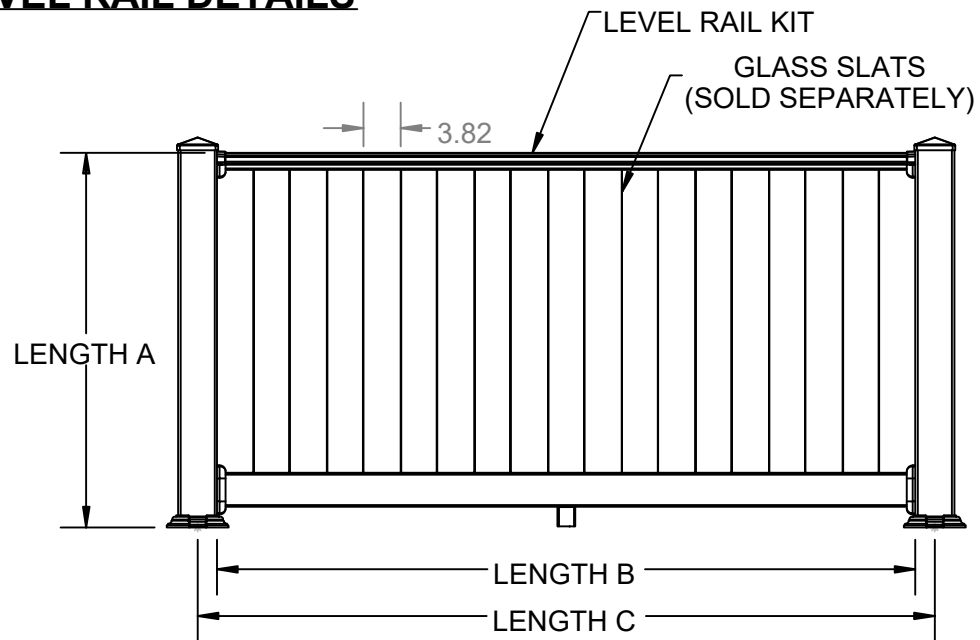
rdi RAILING		
DRAWN: RP	DATE: 04/30/2018	APPROVED:
DESCRIPTION: ORIGINAL RAIL LEVEL AND STAIR RAIL		
SHEET 1 OF 4	REVISION	PART NUMBER
SCALE 1:21	0	N/A
WEIGHT: N/A		

THE INFORMATION CONTAINED IN THIS DRAWING IS PROTECTED BY COPYRIGHT AND PATENT LAWS OF THE UNITED STATES AND OTHER COUNTRIES. ANY REPRODUCTION IN PART OR AS A WHOLE WITHOUT WRITTEN PERMISSION IS PROHIBITED.

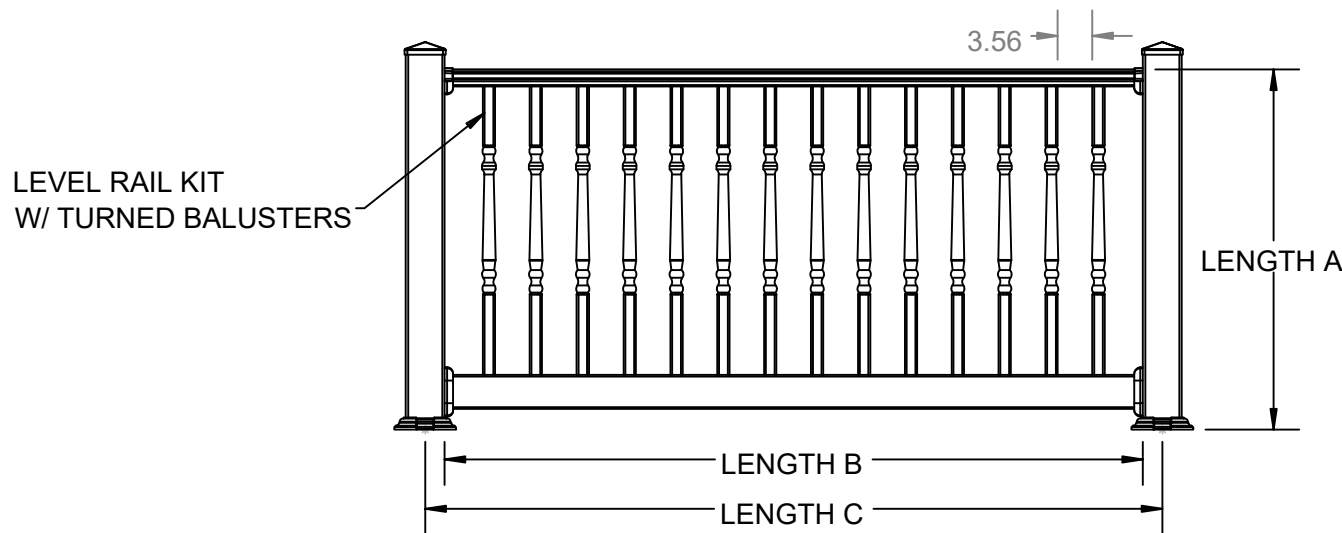
ORIGINAL RAIL LEVEL RAIL DETAILS



NOTE:
 (A) FINISHED RAIL HEIGHT = 36"
 (B) PANEL LENGTH = 71.75", 95.75", 119.75"
 (C) MAX SPANS= 98.5X36"



NOTE:
 (A) FINISHED RAIL HEIGHT = 38"
 (B) PANEL LENGTH = 71.75", 95.75"
 (C) MAX SPANS= 98.5X38"

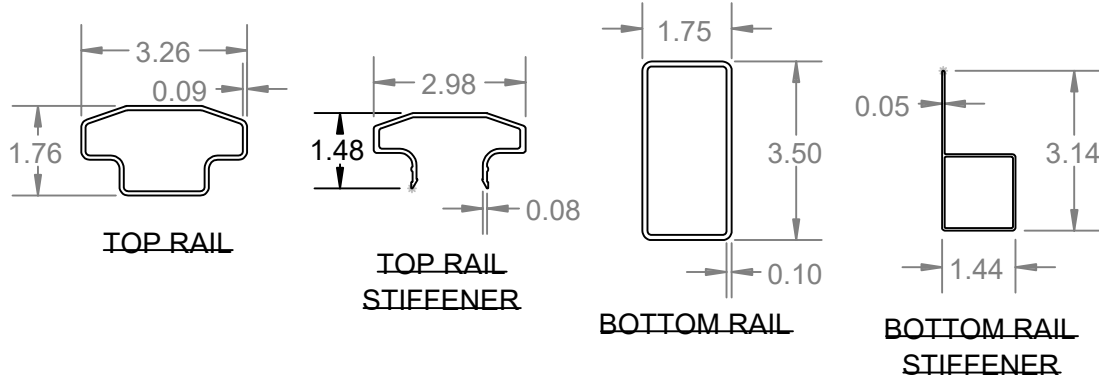


NOTE:
 (A) FINISHED RAIL HEIGHT = 36"
 (B) PANEL LENGTH = 71.75", 95.75", 119.75"
 (C) MAX SPANS= 98.5X36"

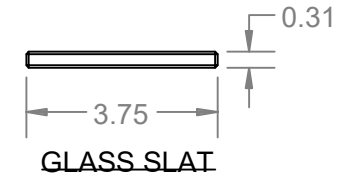
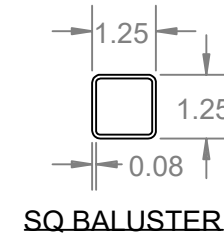
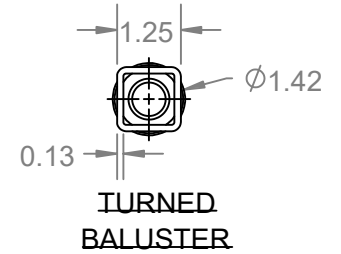
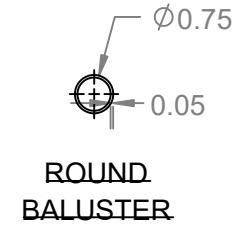
rdi RAILING		
DRAWN: RP	DATE: 04/30/2018	APPROVED:
ORIGINAL RAIL LEVEL RAIL		
SHEET 2 OF 4	REVISION	PART NUMBER
SCALE 1:21	0	N/A
WEIGHT: N/A		

THE INFORMATION CONTAINED IN THIS DRAWING IS PROTECTED BY COPYRIGHT AND PATENT LAWS OF THE UNITED STATES AND OTHER COUNTRIES. ANY REPRODUCTION IN PART OR AS A WHOLE WITHOUT WRITTEN PERMISSION IS PROHIBITED.

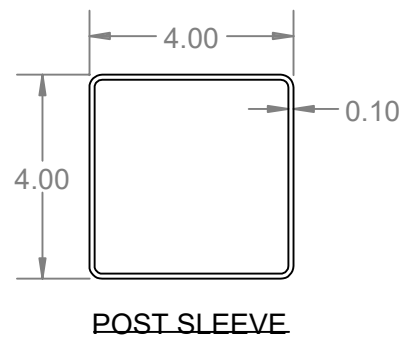
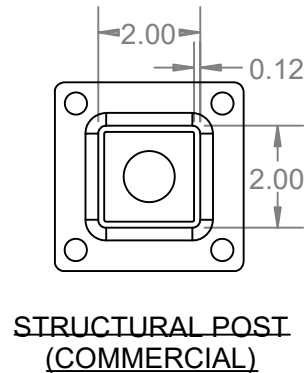
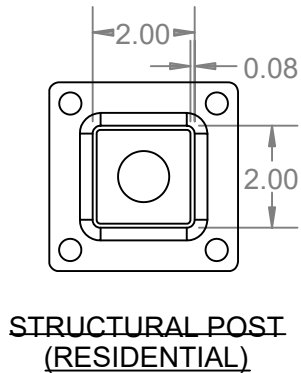
TOP AND BOTTOM RAIL



BALUSTERS



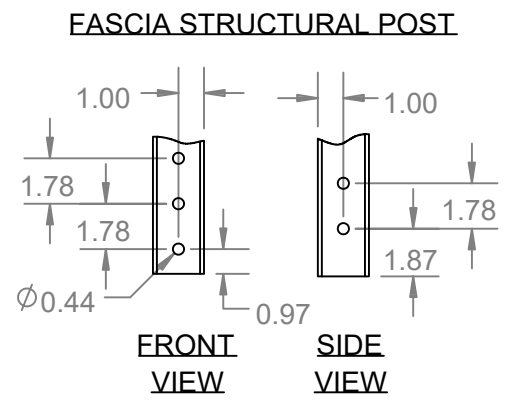
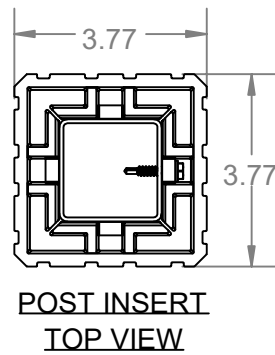
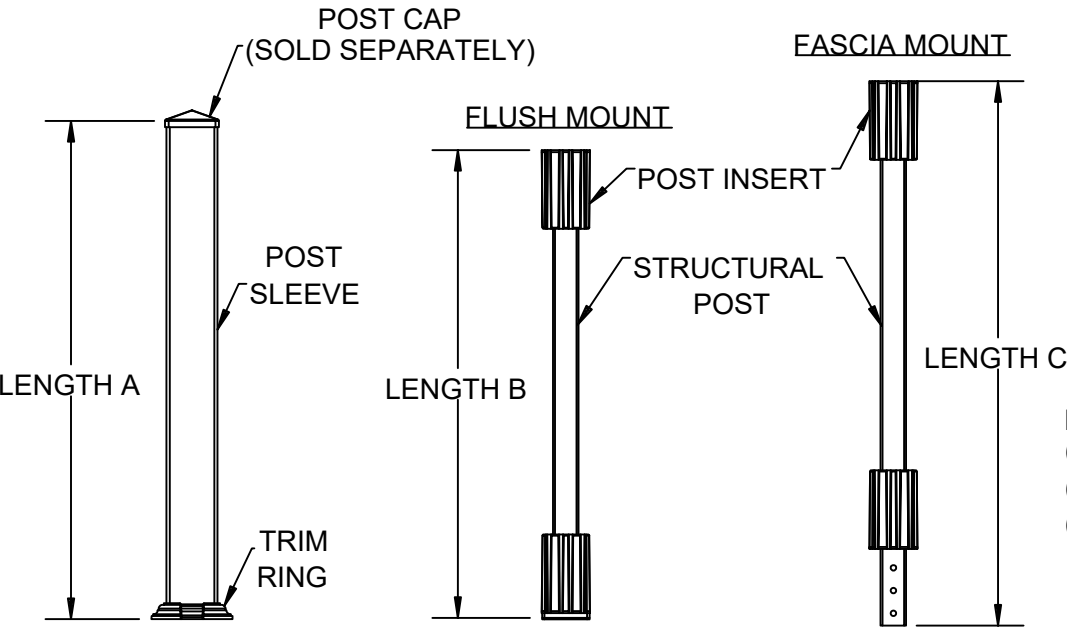
POST COMPONENTS



DRAWN: RP	DATE: 04/30/2018	APPROVED:
DESCRIPTION: ORIGINAL RAIL LEVEL AND STAIR RAIL		
SHEET 3 OF 4	REVISION	PART NUMBER
SCALE 1:4		N/A
WEIGHT: N/A		

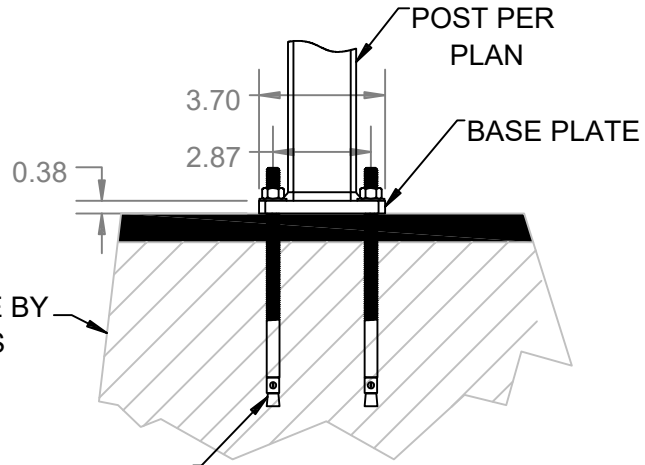
THE INFORMATION CONTAINED IN THIS DRAWING IS PROTECTED BY COPYRIGHT AND PATENT LAWS OF THE UNITED STATES AND OTHER COUNTRIES. ANY REPRODUCTION IN PART OR AS A WHOLE WITHOUT WRITTEN PERMISSION IS PROHIBITED.

ORIGINAL RAIL POST AND MOUNT DETAILS

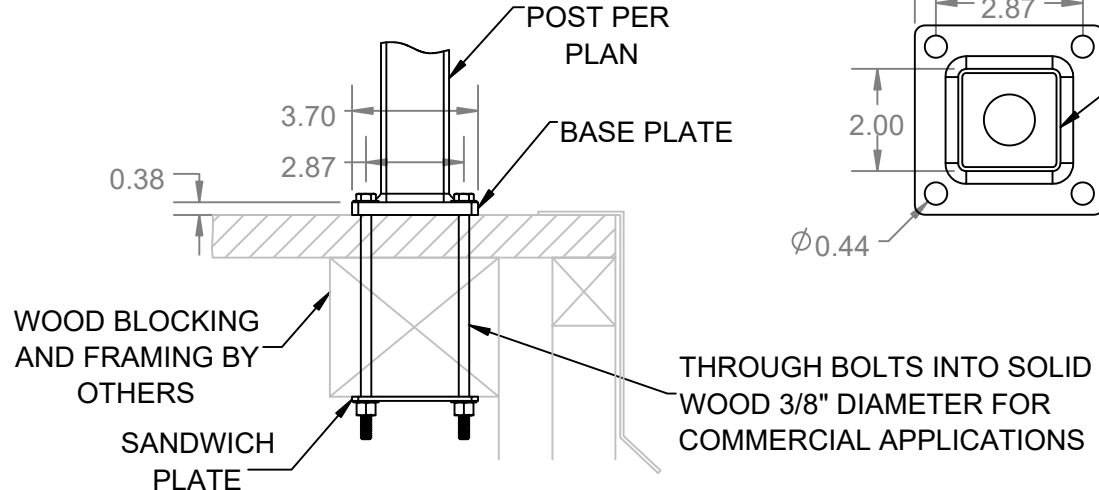


NOTE:
 (A) = 39", 45", 54", 100", 108", 120"
 (B) = 36.625", 42.625"
 (C) = 42.625", 48.625"

POST BASE CONNECTION INTO CONCRETE WITH WEDGE ANCHORS



POST BASE CONNECTION INTO WOOD WITH THRU BOLT



ANCHOR INTO CONCRETE. SEE MANUFACTURER INSTRUCTIONS FOR DETAILS.

- NOTE:
1. COMMERCIAL APPLICATIONS ARE ALWAYS BOLTED, USE 3/8" DIAMETER A307 THROUGH BOLTS INTO SOLID WOOD BLOCKING.
 2. WOOD BLOCKING BY OTHERS.
 3. BLOCKING MUST BE DESIGNED TO WITHSTAND PROPER LOADING.

THE INFORMATION CONTAINED IN THIS DRAWING IS PROTECTED BY COPYRIGHT AND PATENT LAWS OF THE UNITED STATES AND OTHER COUNTRIES. ANY REPRODUCTION IN PART OR AS A WHOLE WITHOUT WRITTEN PERMISSION IS PROHIBITED.

DRAWN: RP	DATE: 04/30/2018	APPROVED:
ORIGINAL RAIL POST AND MOUNT DETAILS		
SHEET 4 OF 4	REVISION	PART NUMBER
SCALE 1:16		N/A
WEIGHT: N/A		